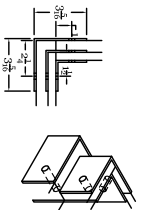
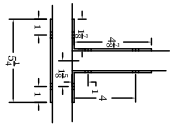


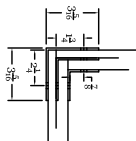
L-3



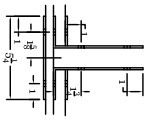
L-12



L-4



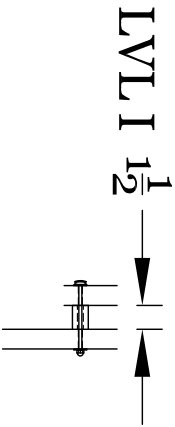
L-13



L-8

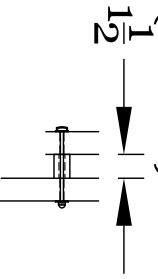
CLIPS

DOWELL ASSEMBLY

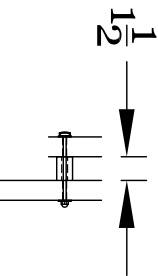


BAFFEL SYSTEM - LVL I = 2" & LVL II 1 3/4"
 ARCH SYSTEM - LVL I & II = 1 1/2"

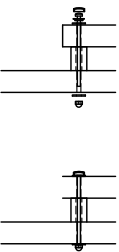
LVL II(CYRO)



LVL II



SECURE SOUND - LVL I & II = 1 1/2"



Project Name:

ASSEMBLY CLIPS AND DOWELS

TYPICAL DETAILS

Total Security Solutions

170 National Park Drive
 Fowlerville, Michigan 48836
 517.223.7807 Fax: 517.223.0805

These drawings and all information hereon are of a confidential nature and remain the property of TOTAL SECURITY SOLUTIONS. Any use or reproduction of these drawings for any purpose, except by written permission of TOTAL SECURITY SOLUTIONS is strictly prohibited.

Drawn By:

Checked By:

Sheet Title:

Sheet Number:

Sheet Name:

Sheet Number:

A1