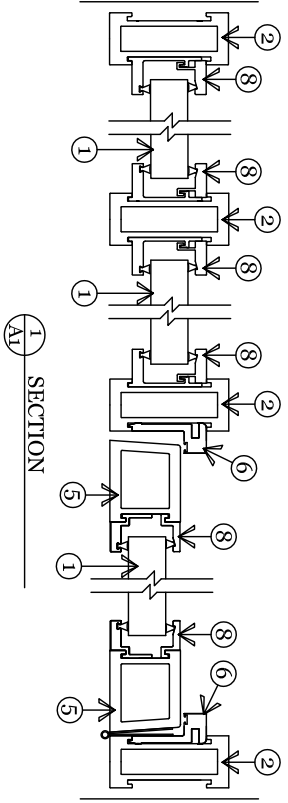
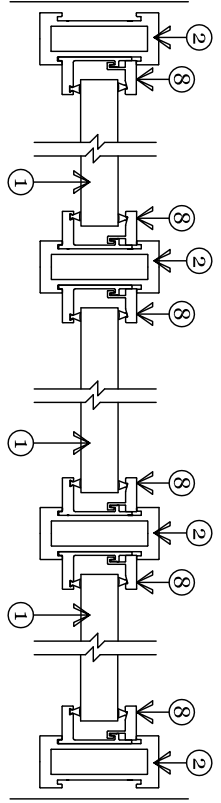


ELEVATION

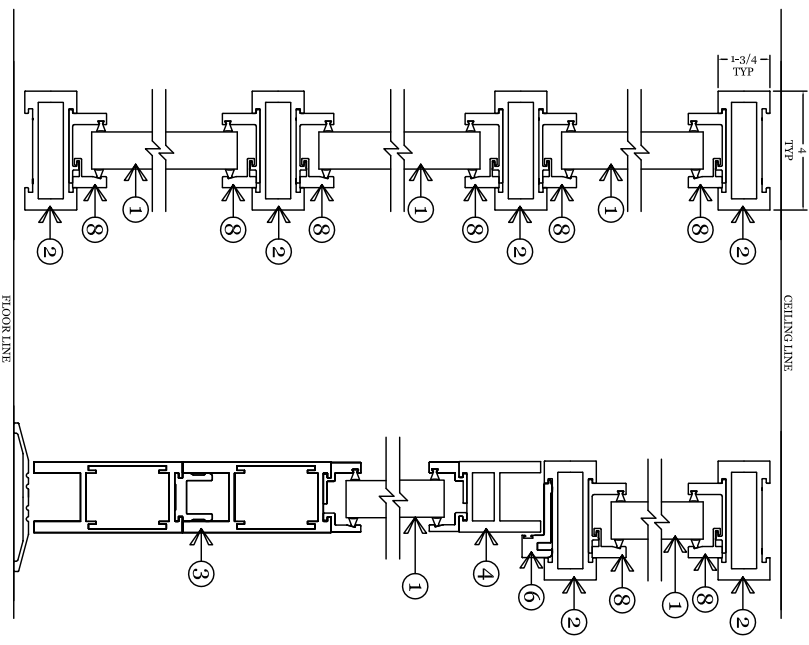


SECTION 1



SECTION 2

- DRAWING NOTES:**
1. BULLET RESISTANT ACRYLIC OR ACRYLIC/POLYCARBONATE COMPOSITE. AVAILABLE IN PROTECTION LEVELS 1,2,3.
  2. 1 1/2 x 4 EXTRUDED ALUMINUM TUBE. LEVEL 3 RATED BALLISTIC PROTECTION.
  3. EXTRUDED ALUMINUM BOTTOM DOOR RAIL. LEVEL 3 RATED BALLISTIC PROTECTION.
  4. EXTRUDED ALUMINUM TOP DOOR RAIL. LEVEL 3 RATED BALLISTIC PROTECTION.
  5. EXTRUDED ALUMINUM DOOR STILE. LEVEL 3 RATED BALLISTIC PROTECTION.
  6. EXTRUDED ALUMINUM DOOR STOP.
  7. EXTRUDED ALUMINUM 2 PIECE GLAZING CHANNEL. LEVEL 3 RATED BALLISTIC PROTECTION. CHANNEL IS INTEGRAL TO PROPERLY CONSTRUCTED FRAMING SYSTEM. GASKET IS SHAPED PER LEVEL OF GLAZING PROTECTION. PROFILE MAY NOT REPRESENT THE ACTUAL SHAPE.
  8. STANDARD COLORS ARE ARCHITECTURAL BRONZE AND CLEAR ANODIZED ALUMINUM. CUSTOM COLORS ARE AVAILABLE ON REQUEST.



SECTION 3

SECTION 4